

AGENDA

Three Key Analytics AI Capabilities Releasing in Q1 '26



Why AI **Fails** to Deliver at Scale.

AI initiatives stall because they're disconnected from operational reality. They lack:



Data Fragmentation

Siloed systems across business lines



Latency & Stale Insights

Difficulty making informed decisions



Unstructured Data Blind Spots

PDFs, reports, and news unused



Regulatory Pressure

Complex compliance and audit demands



AI Readiness Gap

Data not prepared for LLMs or RAG

 The issue isn't AI capability. **It's operational readiness.**

 YOUR ADVANTAGE?

You're **Closer to Agentic AI** Than You Think

What's missing is not capability.

It's connection.

Agentic AI activates what customers have already built, transforming existing investments into intelligent, autonomous systems.

**If You Use Qlik,
You Already Have:**

Governed Analytics Data

Embedded Business Logic

Active Analytics Users

Enterprise-Scale Engine



Qlik Answers

Elevate decision making and productivity

Imagine a unified AI assistant

Driving new levels of insight and productivity for everyone

 Structured Data



Insight from the Qlik analytics engine

 Unstructured Data



Knowledge from content and documents

 World Class AI



Reasoning and assistance from LLMs

What regions are using the most energy?

- What are some of the reasons for this?
- Give me a plan to improve energy efficiency...



Advanced AI Reasoning

Answer a variety of types of questions and blend them together

Analytical

Simple questions from a dataset

“What are my sales for 2024?”

Text to SQL

Unstructured

Questions sourced from unstructured content

“Summarize the parts required from the instruction manual.”

General

Questions outside the scope of your internal data

“What does the EU have to say about AI regulations?”

Compound

Multiple questions in a single prompt

“How many orders did I receive in 2024, and how many were returned?”

Ambiguous

Open ended questions that require reasoning

“What can you tell me about my investment portfolio?”

Speculative

Questions that ask for opinions and suggestions

“Do you see any benefit to running a promotion in Q1 or should I wait to Q2?”

Alternative

Questions about “what’s not” in addition to what is

“Which product categories were not purchased by our top 10% high-value customers last year?”

Qlik Answers

A person is holding a tablet computer. The screen of the tablet is white and displays the word "DEMO" in a bold, green, sans-serif font. The background is a blurred indoor setting with a blue wall on the left and a window on the right. The person's hands are visible, holding the edges of the tablet. The overall image has a professional and clean aesthetic.

DEMO

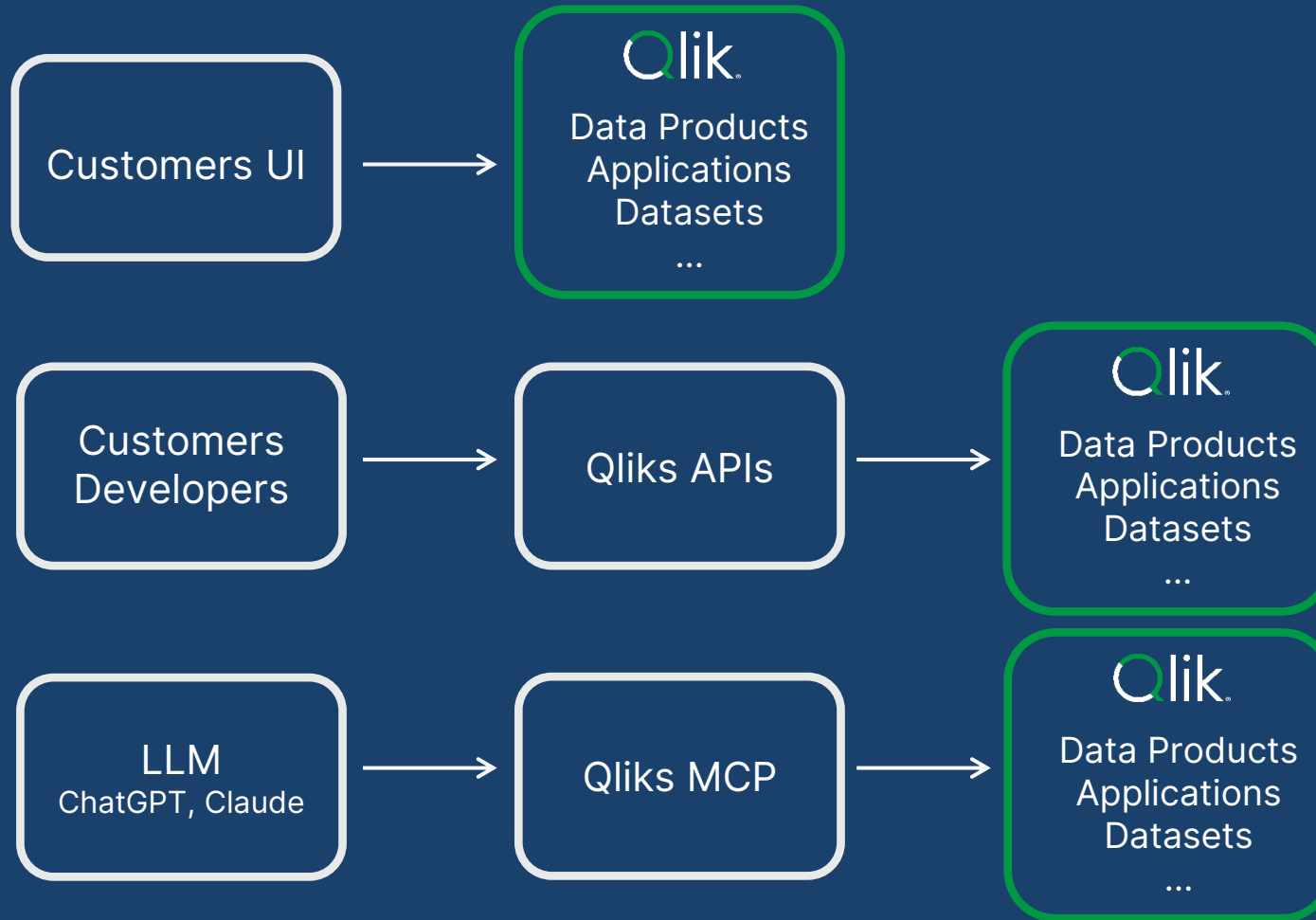


Qlik MCP Server

The doorway for AI agents and assistants

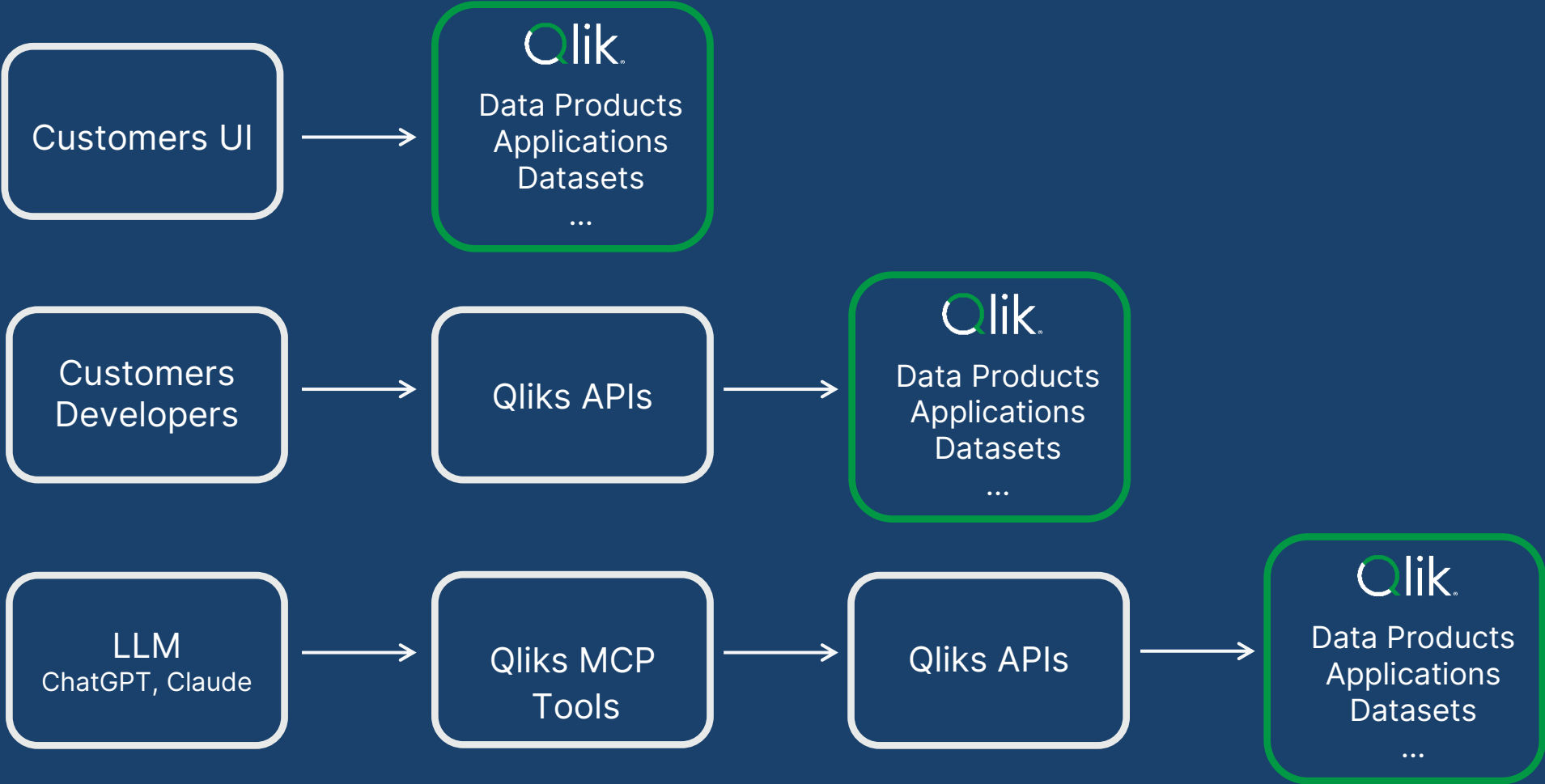
What is MCP, and what is Qlik offering?

How to interact with Qlik



What is MCP, and what is Qlik offering?

How to interact with Qlik

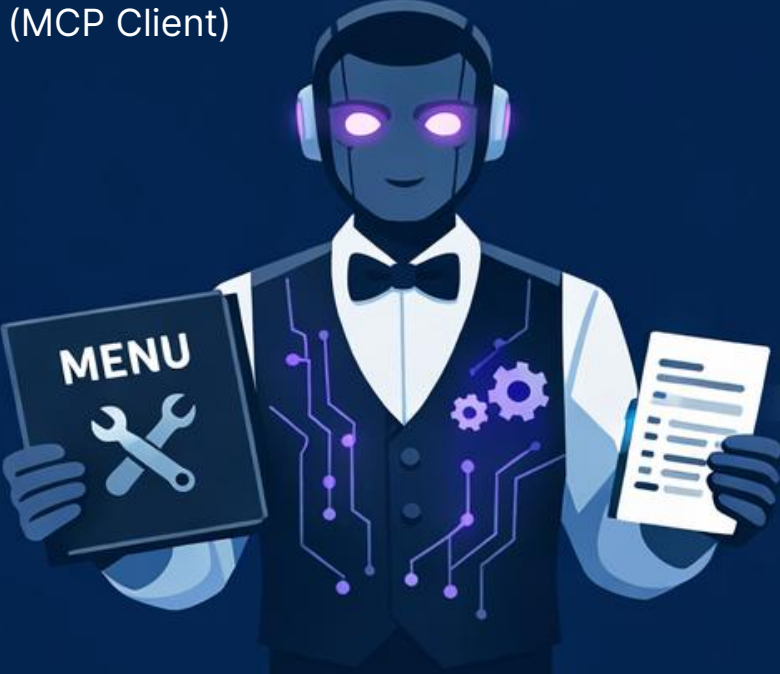


MCP Servers Explained: The Restaurant Analogy

User

AI Tool – Claude/ChatGPT/Etc.
(MCP Client)

Qlik's MCP server



MCP Tools

MCP Request

Qlik APIs

MCP Response

Think of MCP servers as **USB for AI**

It's a **universal standard** so any AI
can plug into any enterprise system
without custom wiring

USB4

USB 3.2

USB 3.0

USB 2.0



Claude
Cursor
N8n

VS Code +
Github Copilot

ChatGPT

Microsoft 365
Copilot

Mistral Le Chat

A person is holding a tablet computer. The screen of the tablet is white and displays the word "DEMO" in a bold, green, sans-serif font. The person's hands are visible, holding the edges of the tablet. The background is a blurred indoor setting with a window. A dark blue gradient overlay covers the left side of the image, and there are some light blue and green horizontal streaks at the bottom left.

DEMO



Answers vs. MCP Server

Qlik Answers or MCP?

When to use each



Qlik Answers

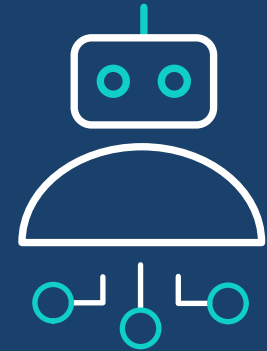
- Qlik's unified AI assistant
- Powerful agentic reasoning that takes advantage of our data products and analytics engine
- Plug-and-play simplicity

The "easy button" for AI



- Access Qlik through third-party AI
- A complete set of tools for insight and automation across the Qlik portfolio
- Complex, custom AI solutions

"API's for LLMs"



MCP Server



Discovery Agent

Proactive, AI-driven anomaly detection for Qlik Cloud

Legal Disclaimer

Qlik® roadmaps provide a general overview of our anticipated product direction as of the date hereof. Qlik undertakes no intention or obligation to update or revise any forward-looking statements contained herein, whether as a result of new information, future events or otherwise.

The information contained in Qlik roadmaps is the proprietary information of Qlik and is not to be used for any reason other than to provide our customers, prospective customers, partners and strategic partners with a general overview of our anticipated future offerings. Our roadmaps are not a commitment, promise or other obligation on the part of Qlik to deliver any particular code or functionality. Furthermore, Qlik makes no commitment that any future functionality may be made available as part of maintenance and support.

Roadmap information should not be relied on in making a purchasing decision, as the development, release, and timing of any features or functionality described for Qlik's products remains at our sole discretion.

© 2025 QlikTech International AB. All rights reserved. All product and company names are trademarks™ or registered® trademarks of their respective holders.

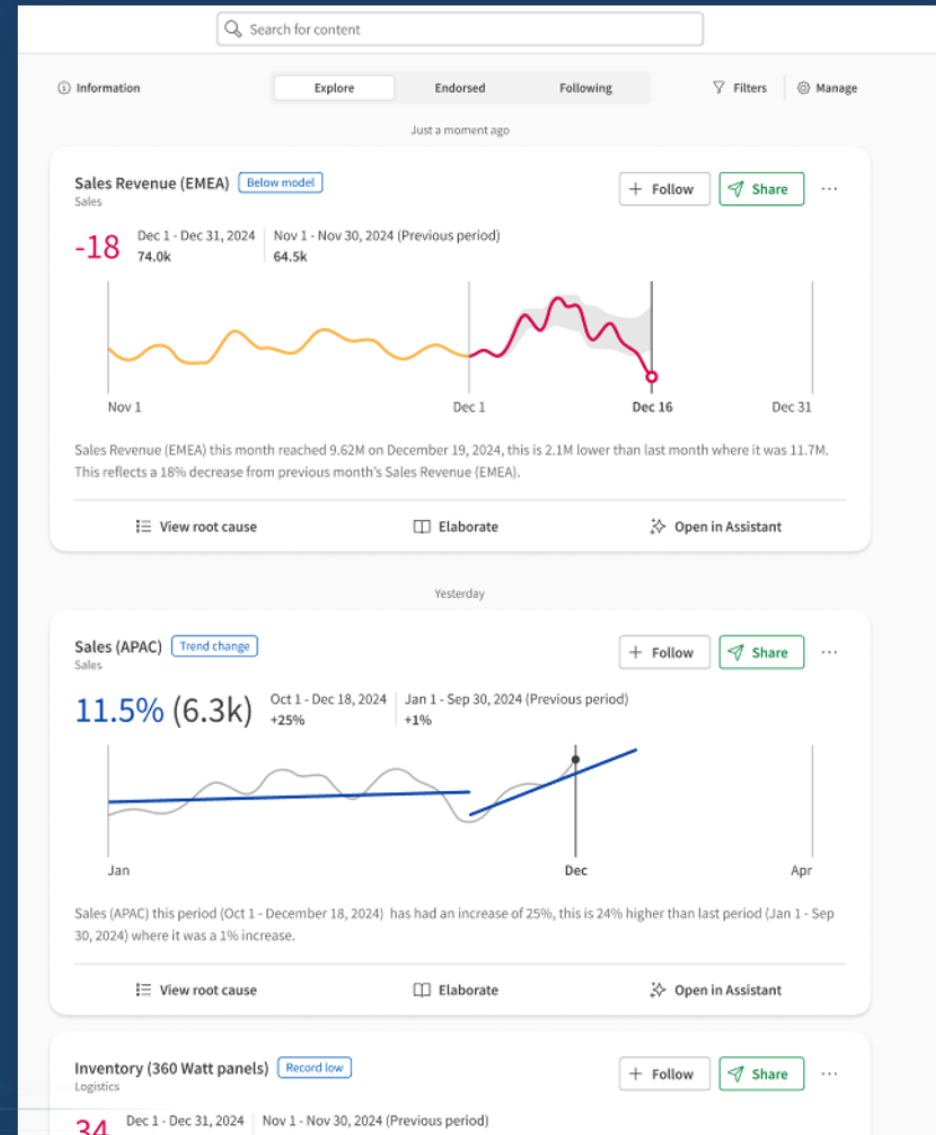
Introducing Discovery Agent

Automatic anomaly detection and summarization of critical data changes

Discovery Agent continuously **detects** and **summarizes** the most important changes in your data so your teams can act **before** issues escalate.

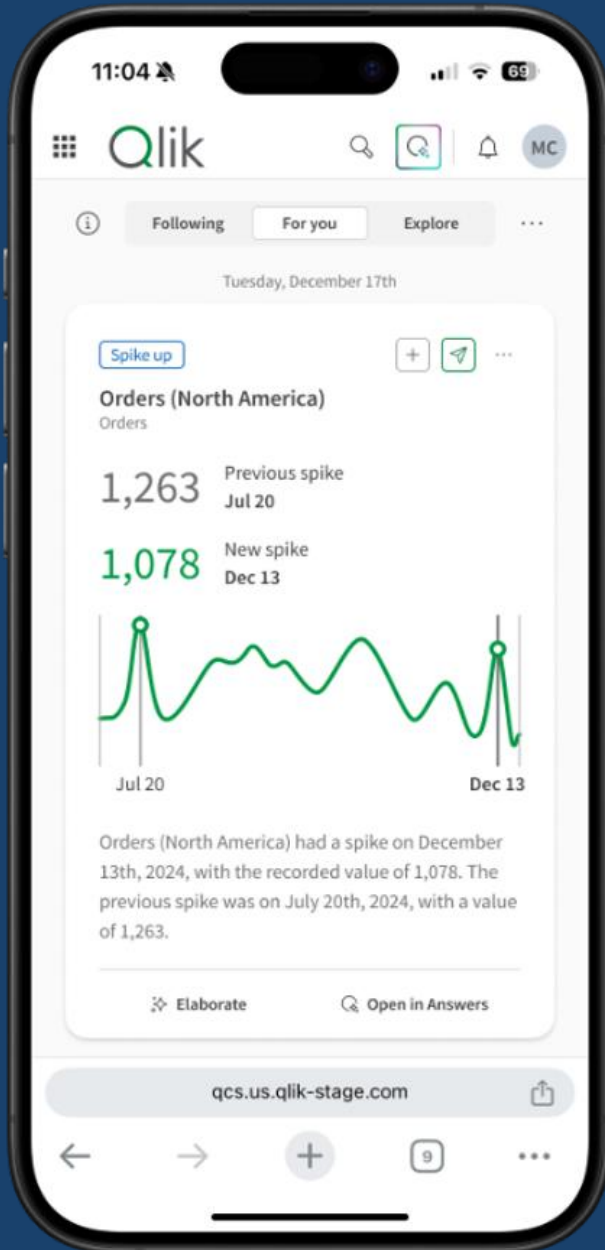
It monitors your Qlik Cloud apps behind the scenes and delivers clear, prioritized insights directly to users.

- ✓ No rigid rules.
- ✓ No predefined thresholds.
- ✓ No manual monitoring.



How Discovery Agent Works

A simple, powerful three-step model



Detect

- Uses your app's full data model
- Identifies spikes, drops, trend shifts, new normals, and data quality issues
- Evaluates wide combinations of dimensions using the Qlik Analytics Engine



Evaluate

- Determines which anomalies are meaningful
- Filters noise and ranks insights by significance
- Provides light key-driver context when available



Deliver

- Presents results in a prioritized insights feed
- Summarizes daily changes in an AI-generated digest
- Uses clear, readable language anyone can understand